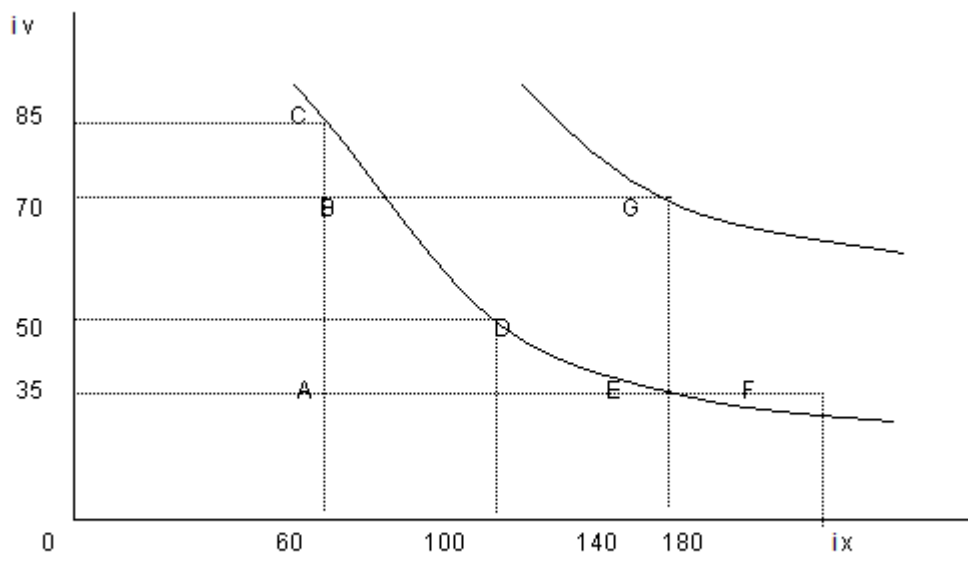


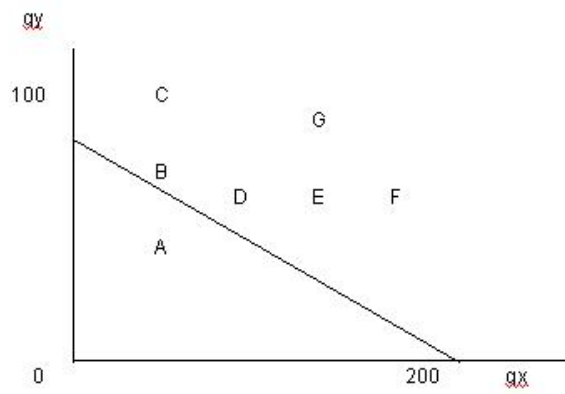
Figuur 1



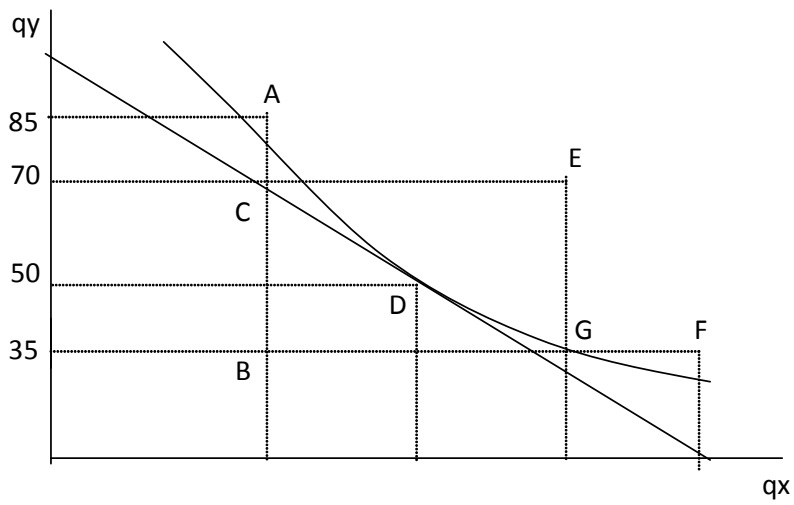
i_x = hoeveelheid van ingrediënt x
 i_y = hoeveelheid van ingrediënt y

Figuur 3

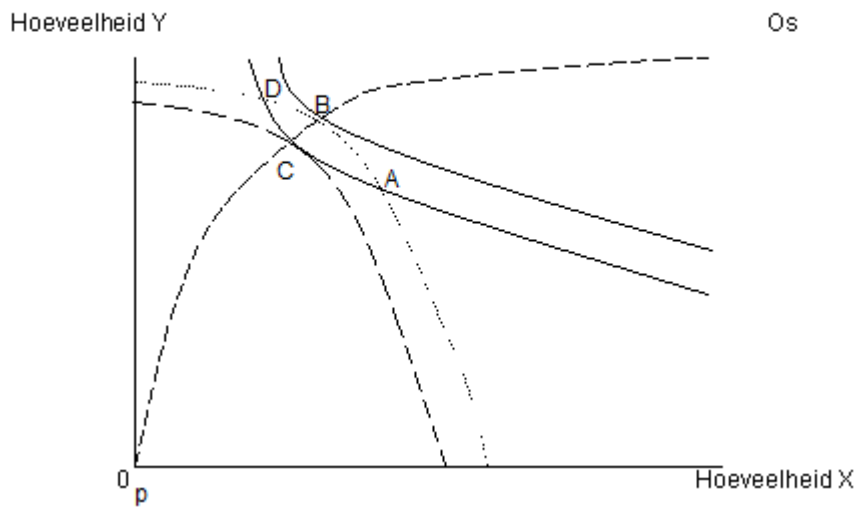
$$2000 = 10q_x + 20q_y$$



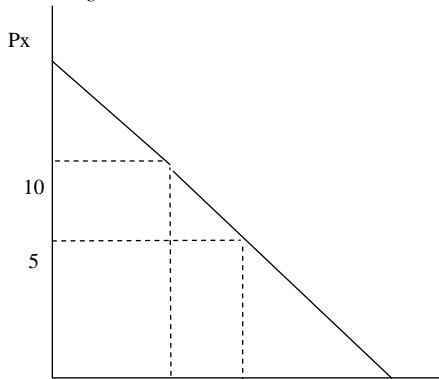
Figuur 4 *Figuur van de optimale keuze*



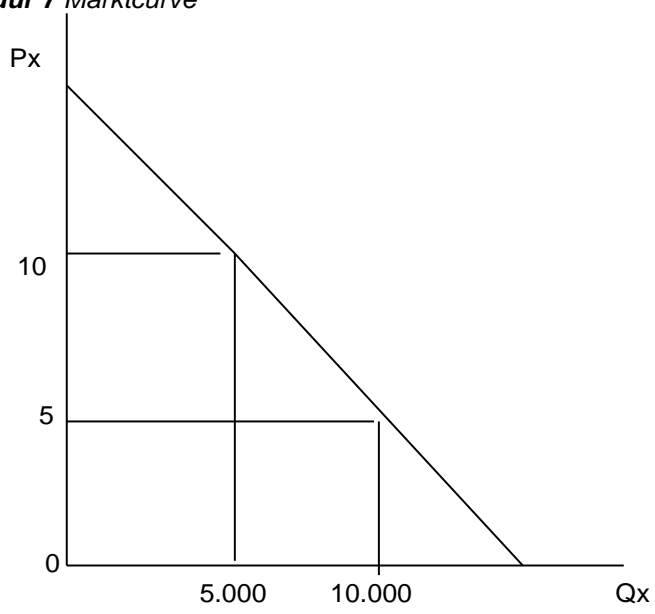
Figuur 5 *Edgeworth-box met contractcurve*



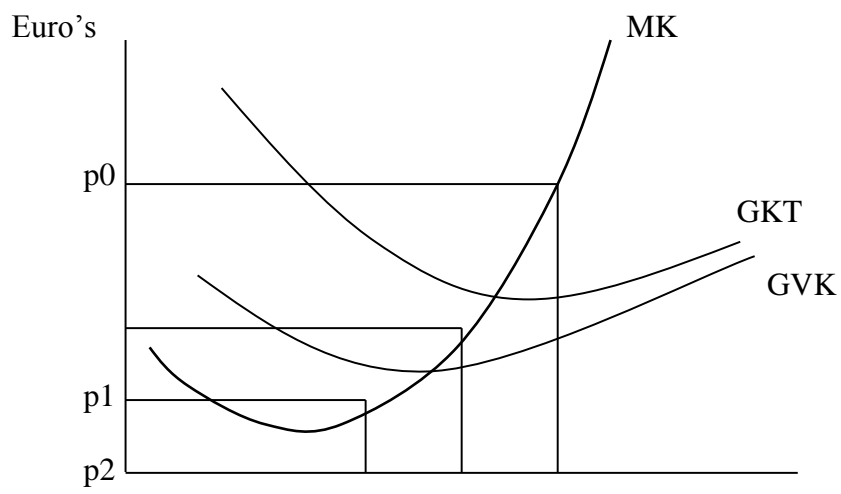
Figuur 6 *Vraagcurve*



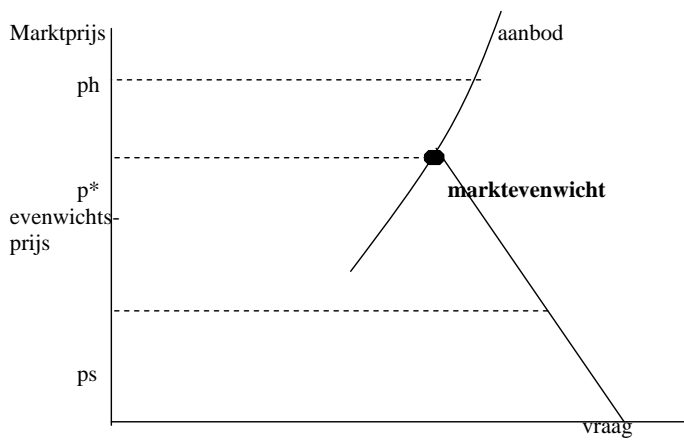
Figuur 7 Marktcurve



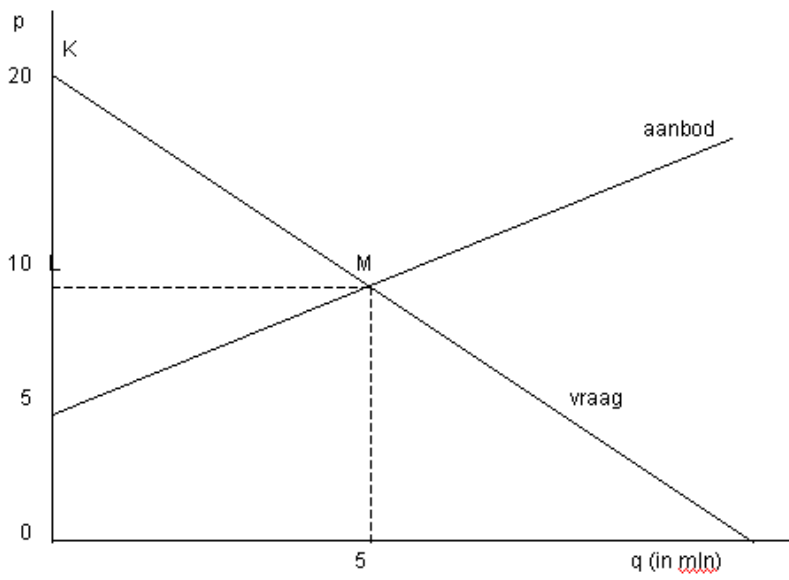
Figuur 8

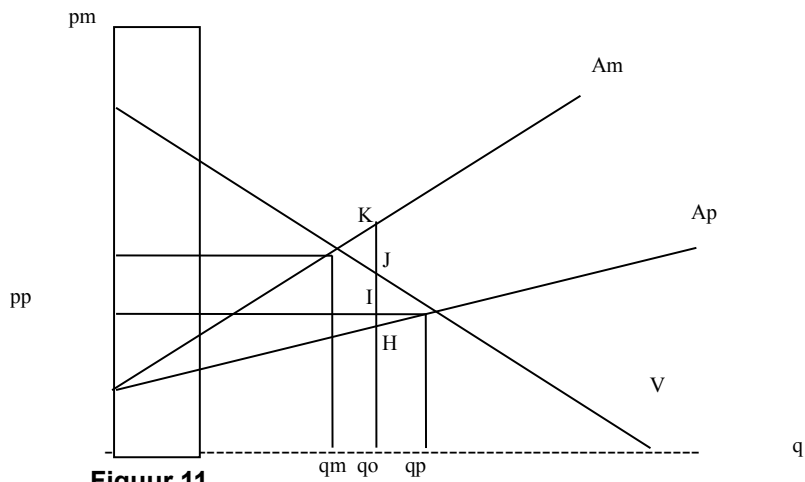


Figuur 9

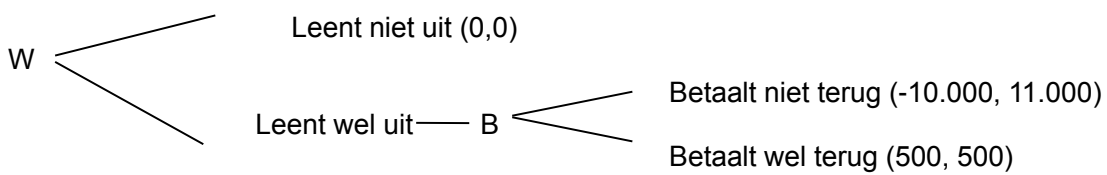


Figuur 10

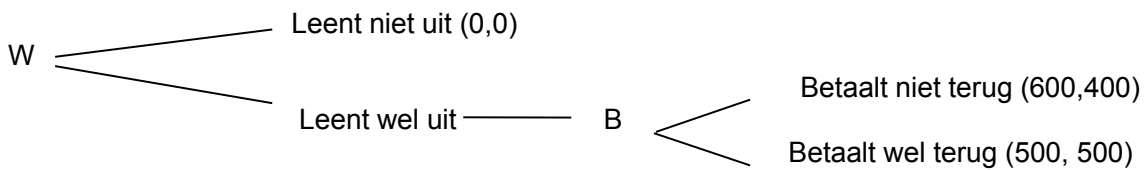




Figuur 11

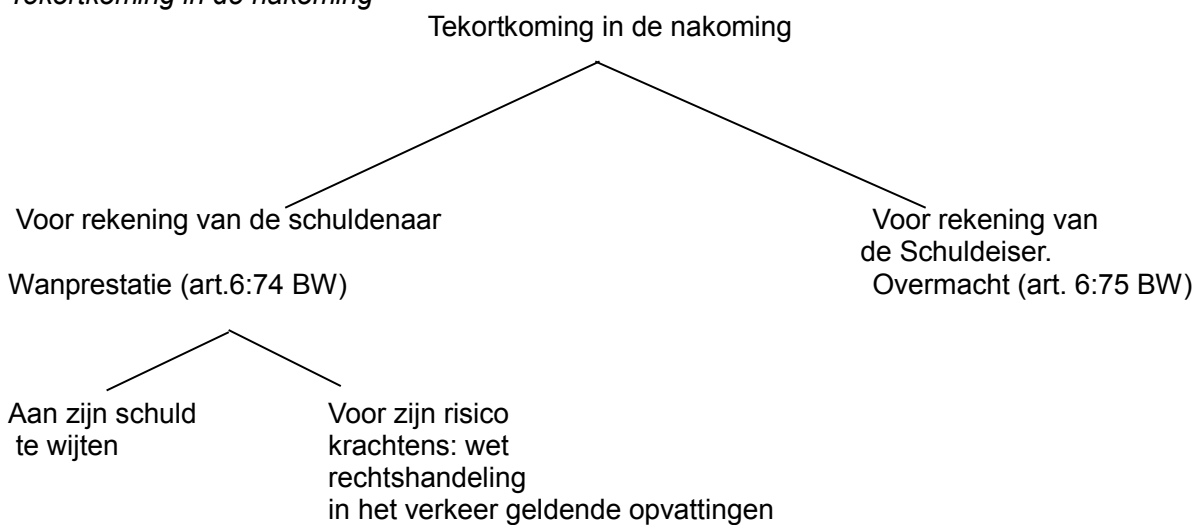


Figuur 12

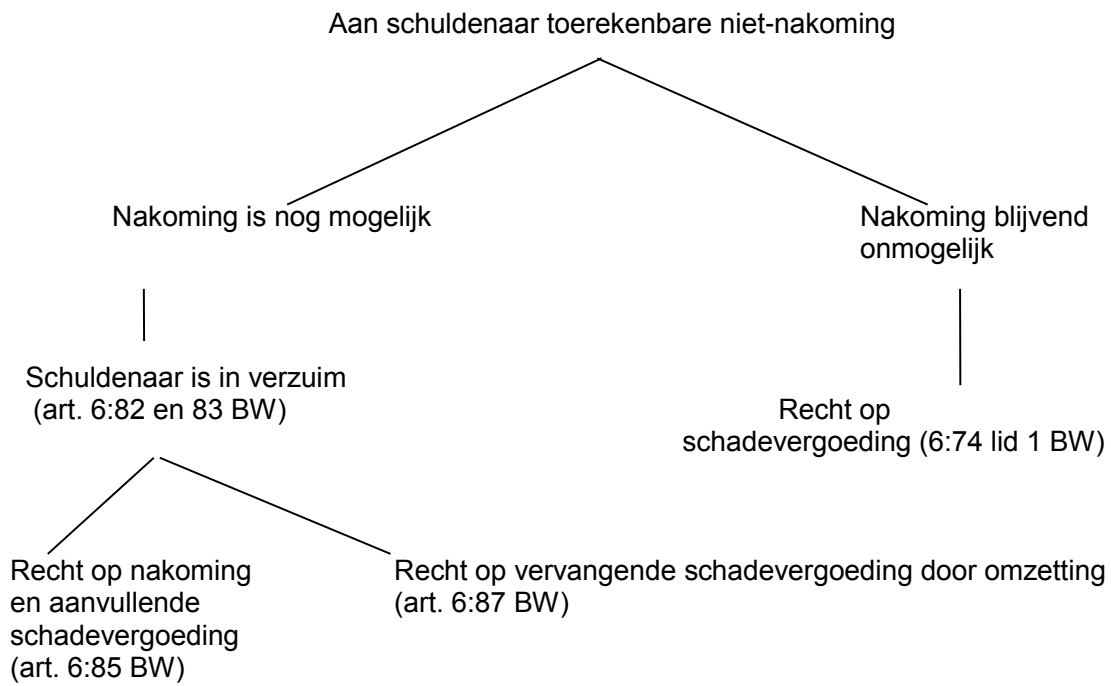


Figuur 13

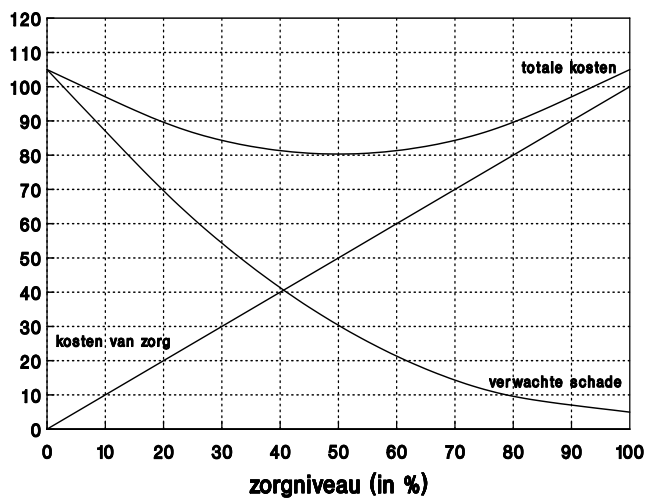
Tekortkoming in de nakoming



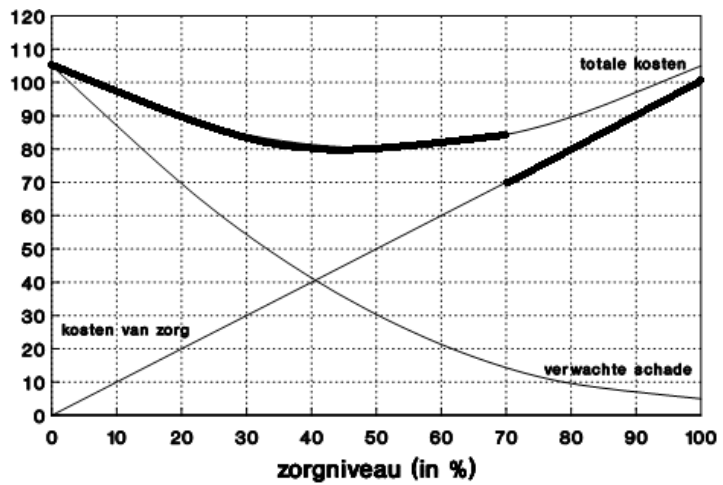
Figuur 14



Figuur 15



Figuur 16: Het verband tussen de kosten van zorg en de verwachte schade



Figuur 17: Het verloop van de kosten van de dader bij een vereist zorgniveau van 70%