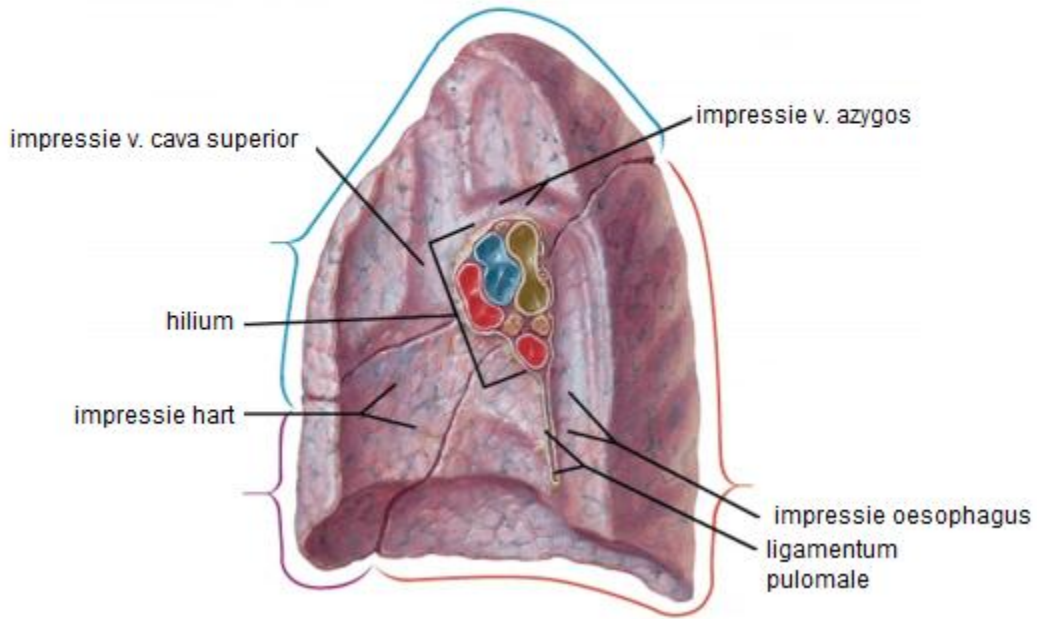
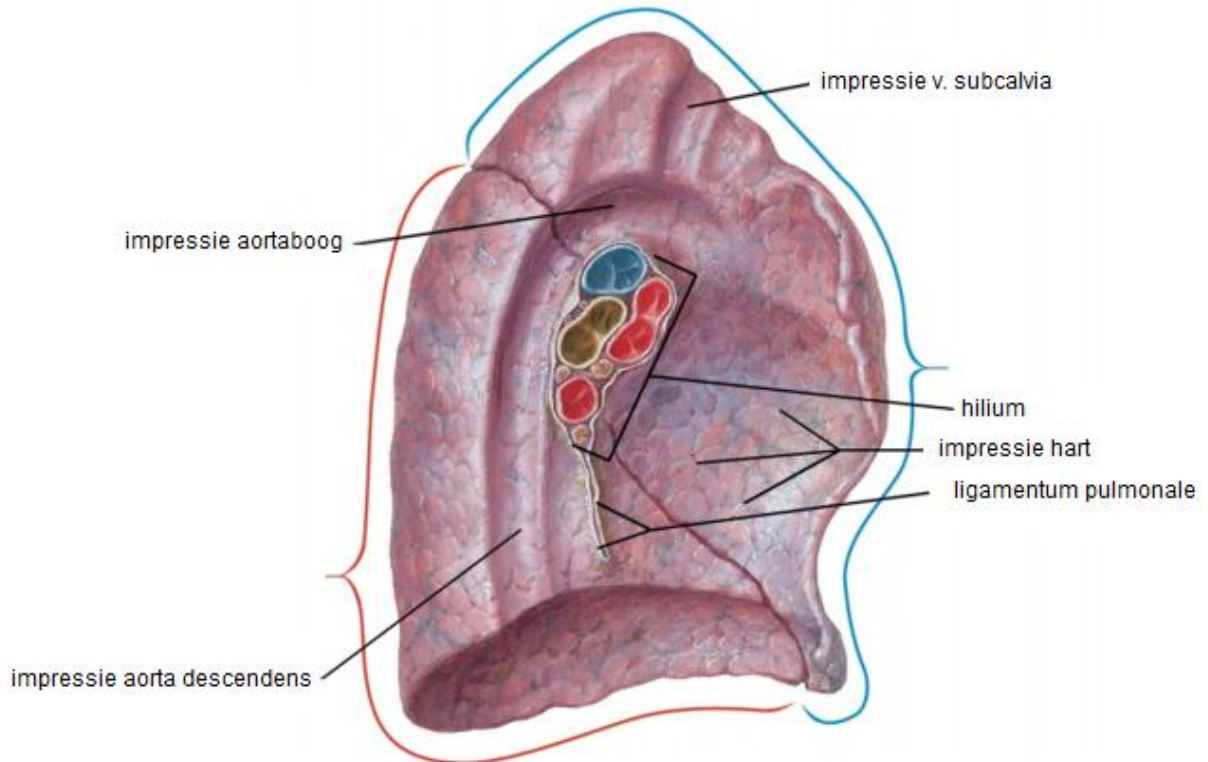


**Right Lung
Medial View**

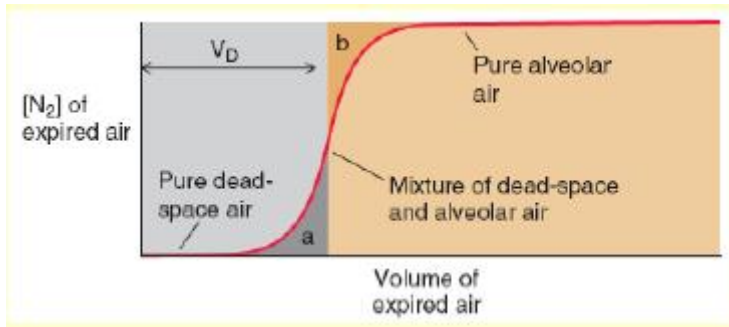


Afbeelding 1 (Powerpoint presentatie HC-Longen 2102-2011)

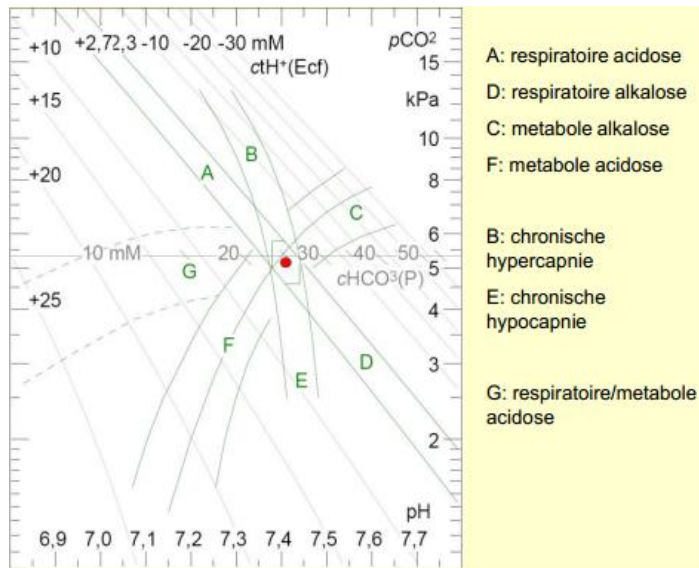
**Left Lung
Medial View**



Afbeelding 2

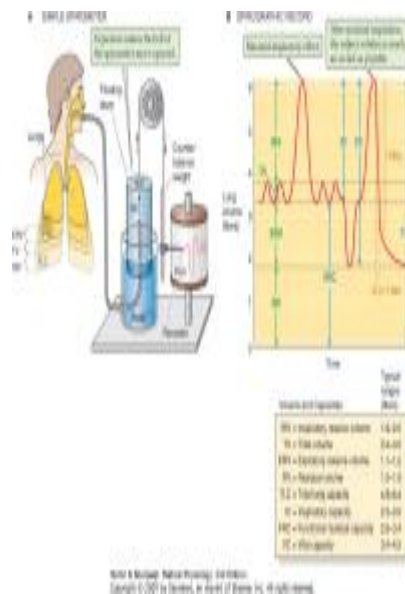


Afbeelding 3

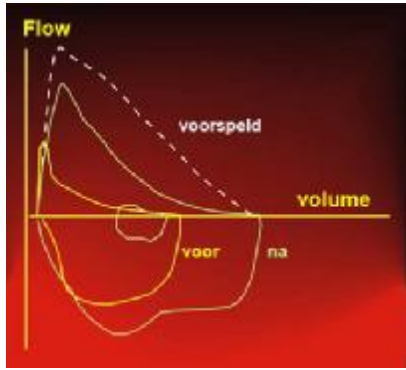


Afbeelding 4

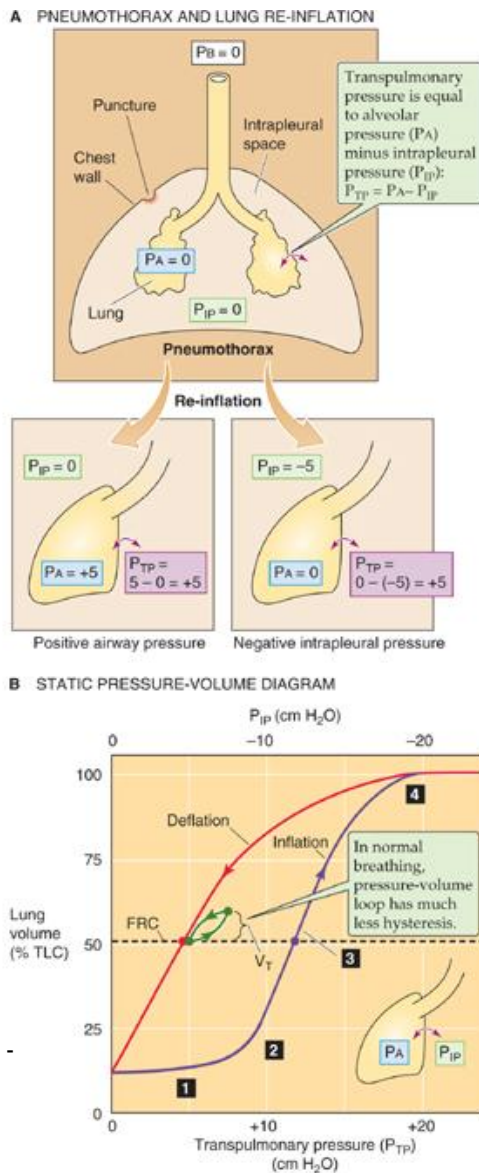
Afbeelding 5



Figuur 3 – Boron en Boulpaep, Medical Physiology, 2nd edition, Saunders Elsevier, 2009



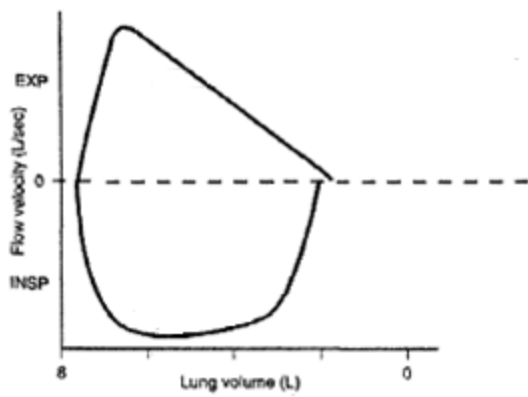
Afbeelding 6



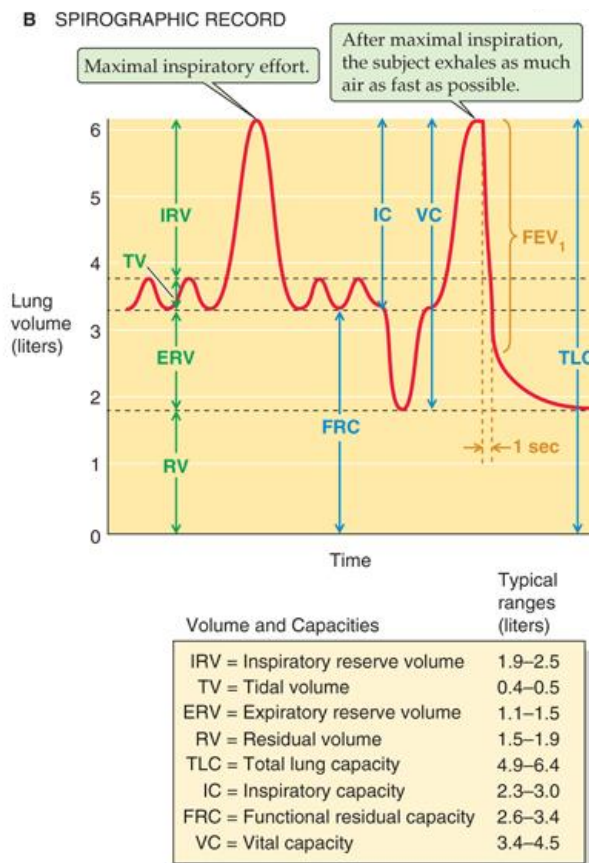
Figuur 5 -

Boron & Boulpaep: Medical Physiology, 2nd Edition.
 Copyright © 2009 by Saunders, an imprint of Elsevier, Inc. All rights reserved.

Afbeelding 7

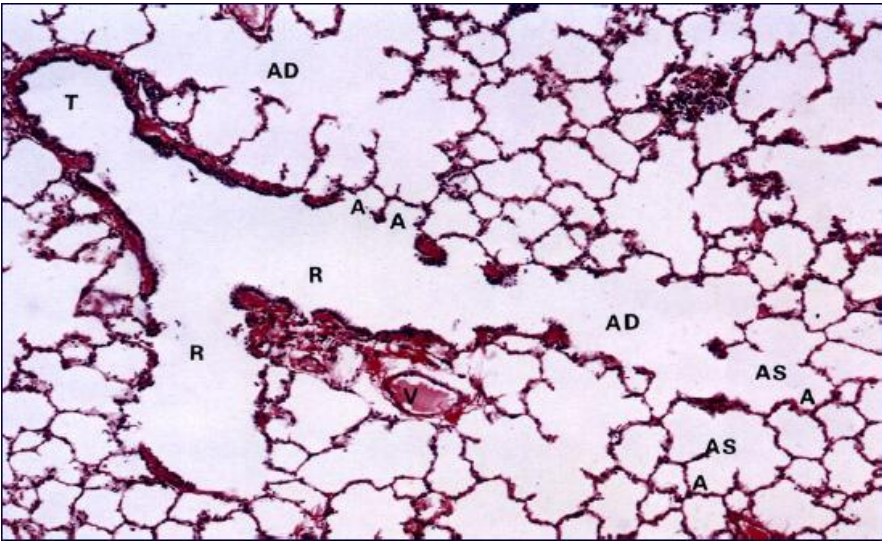


Afbeelding 8

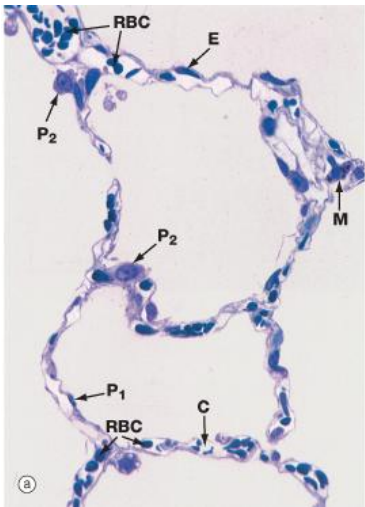


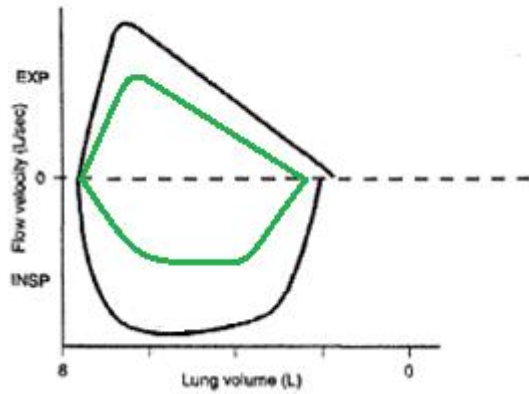
Afbeelding 9 en 10

C = capillair E = capillair endotheelcel M=alveolaire macrofaag, P1, P2 = P1 en P2 pneumocyten, RBC = rode bloedcel

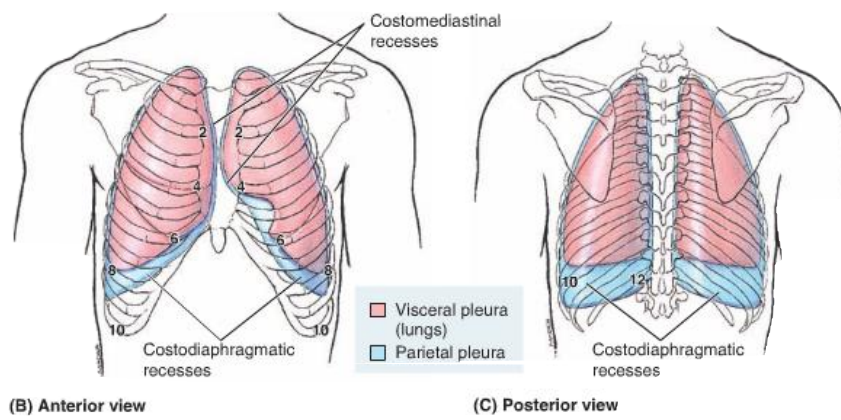


Wheater's Functional Histology a text and colour atlas, Young B., Lowe J.S., Stevens A., Heath J.W., 2006, Elsevier T = terminal bronchiole, R = bronchiolus respiratorius, AD = ductus alveolares Alveolar sacs, A = Alveoli, V = vene

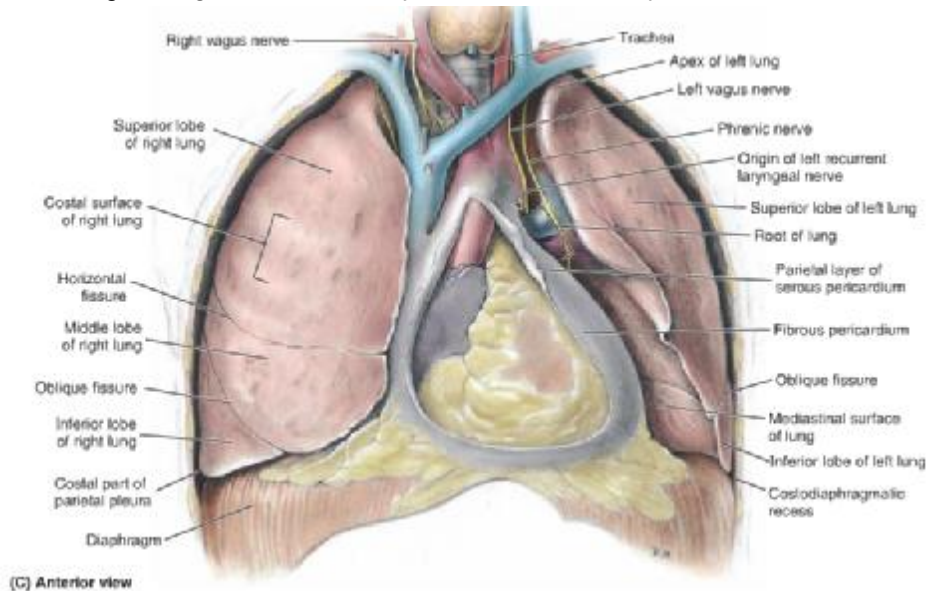




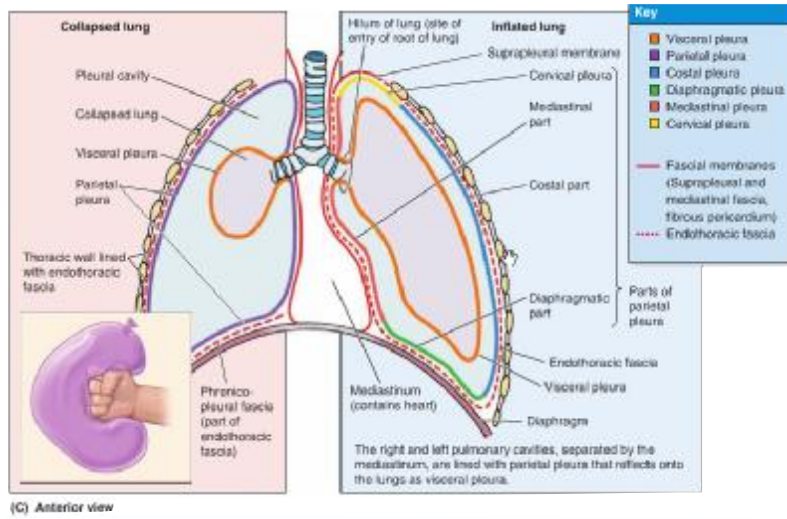
Afbeelding 11



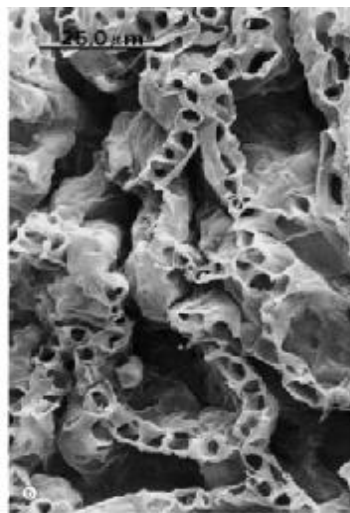
Afbeelding 12 (figuur 6 - Clinically Oriented Anatomy, 6th edition, Moore K.L, Dalley A.F., Agur A.M.R., 2010)



Afbeelding 13



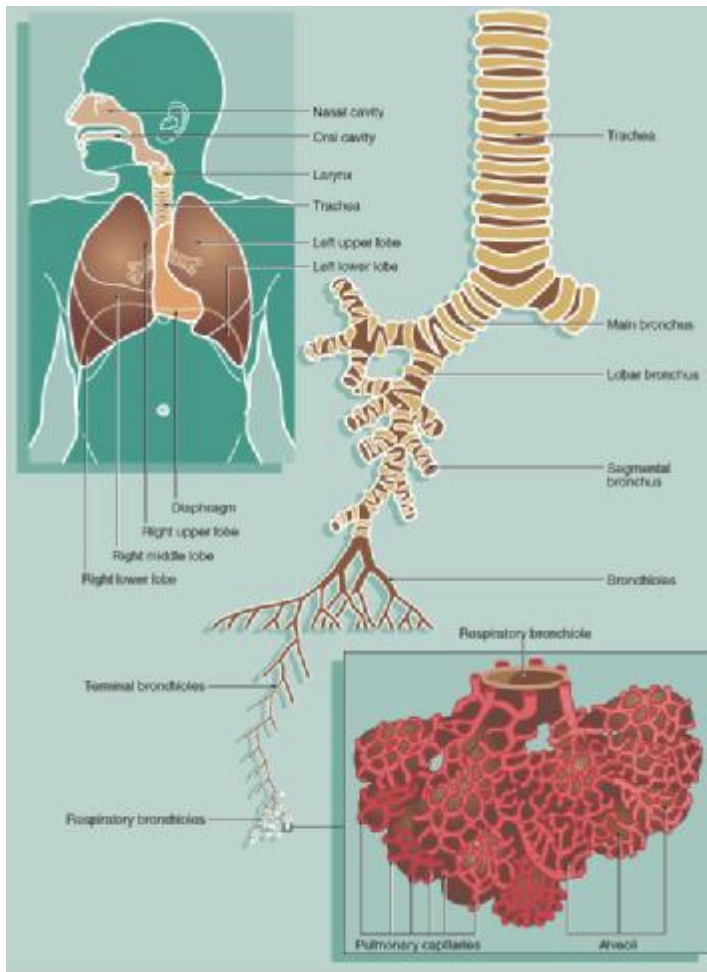
Afbeelding 14



Afbeelding 15 © Elsevier, Young et al. Wheater's Functional Histology 5e - www.studentconsult.com

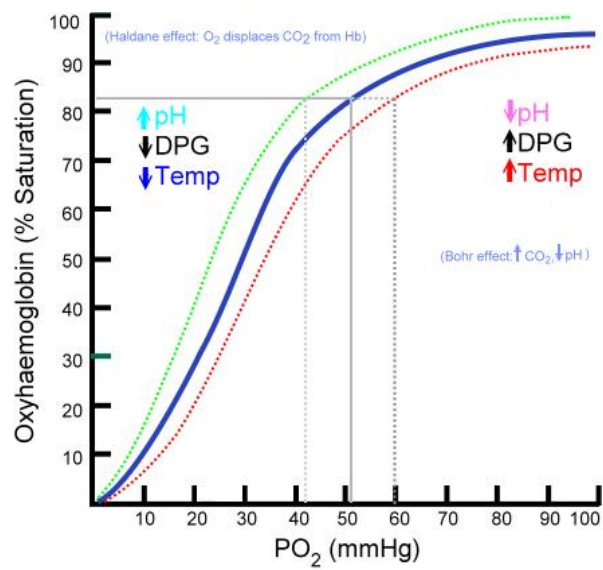
Zie afbeelding 16

Zie afbeelding 17



© Elsevier: Young et al. Wheater's Functional Histology 5e - www.studentconsult.com

Zie afbeelding 18



Afbeelding 19

Diafragma en externe intercostaalspieren trekken samen

Volume van de thoraxholte stijgt

Intrapleurale druk wordt negatiever

inademing

Longen zetten uit

Intrapulmonaire druk wordt negatiever

Lucht komt de longen binnen

Diafragma en externe intercostaalspieren ontspannen

Gas	Percentage in lucht	Partiële druk gas
O ₂	20,9	$20,9 * 760 = 159 \text{ pO}_2$
CO ₂	0,04	$0,04 * 760 = 0,3 \text{ pCO}_2$
N ₂	78,6	$78,6 * 760 = 597 \text{ pN}_2$
H ₂ O	0,46	$0,46 * 760 = 3,5 \text{ pH}_2\text{O}$

Afbeelding 20

